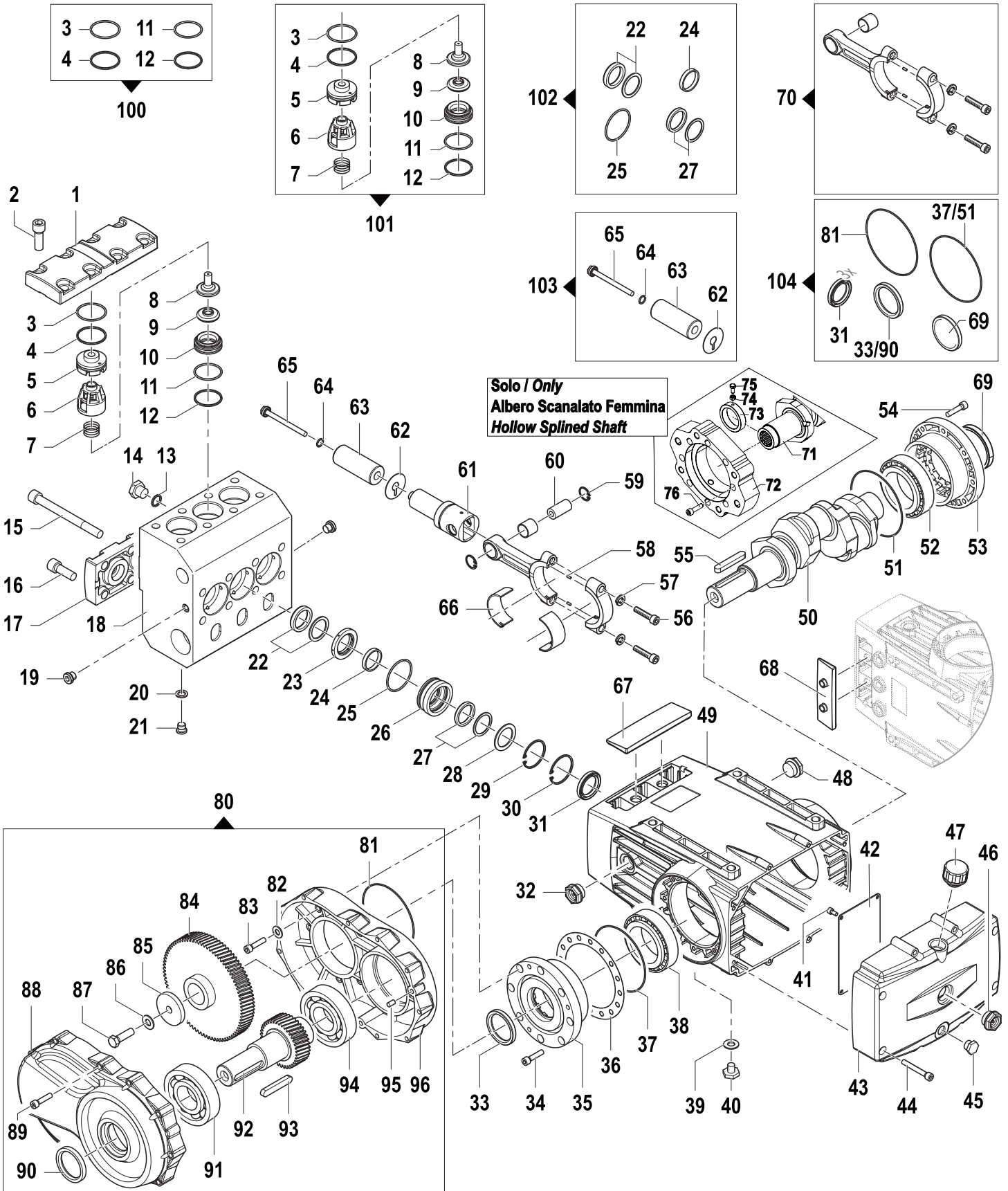


# ES - ESR Series

Pompe Alta Pressione - High Pressure Pumps

106/250 - 133/210 - 153/200  
185/160 - 203/160 - 220/140

1200 - 1300 - 1500  
1800 - 2200 RPM





# ES - ESR Series

Pompe Alta Pressione - High Pressure Pumps

106/250 - 133/210 - 153/200  
185/160 - 203/160 - 220/140

1200 - 1300 - 1500  
1800 - 2200 RPM

| N° | Cod.      | Descrizione         | Description        | Note       | Qty | Model    |
|----|-----------|---------------------|--------------------|------------|-----|----------|
| 88 | 0402 0509 | Coperchio Riduttore | Gearbox Cover      |            | 1   |          |
| 89 | 3609 0006 | Vite                | Screw              | M8x30      | 11  |          |
| 90 | 0019 0187 | Anello Tenuta       | Packing            | Ø50x65x8   | 1   |          |
| 91 | 0438 0133 | Cuscinetto          | Bearing            | Ø50x110x27 | 1   |          |
| 92 | 2402 0185 | Pignone             | Pinion Gear        |            | 1   | 1500 RPM |
| 92 | 2402 0182 | Pignone             | Pinion Gear        |            | 1   | 1800 RPM |
| 92 | 2402 0183 | Pignone             | Pinion Gear        |            | 1   | 2200 RPM |
| 93 | 1202 0074 | Linguetta           | Key                | 12x8x70    | 1   |          |
| 94 | 0438 0133 | Cuscinetto          | Bearing            | Ø50x110x27 | 1   |          |
| 95 | 3018 0019 | Spina               | Pin                | Ø8x14 H8   | 2   |          |
| 96 | 3001 0555 | Carter Riduttore    | Gear Box Crankcase |            | 1   |          |

## Kit Manutenzione

Maintenance Kit

**NB: Quantità necessaria per riparare una pompa**

*NB: Necessary quantity to repair one pump*

|     |           |                            |                      |     |   |                               |
|-----|-----------|----------------------------|----------------------|-----|---|-------------------------------|
| 100 | 5019 0260 | Kit Guarniz. Acqua Valvole | Valve Water Seal Kit |     | 3 |                               |
| 101 | 5025 0068 | Kit Valvole                | Valve Kit            |     | 3 |                               |
| 102 | 5019 0261 | Kit Guarnizioni Acqua      | Water Seal Kit       | Ø36 | 3 | 220/140                       |
| 102 | 5019 0262 | Kit Guarnizioni Acqua      | Water Seal Kit       | Ø33 | 3 | 185/160-<br>203/160           |
| 102 | 5019 0263 | Kit Guarnizioni Acqua      | Water Seal Kit       | Ø28 | 3 | 133/210                       |
| 102 | 5019 0264 | Kit Guarnizioni Acqua      | Water Seal Kit       | Ø25 | 3 | 106/250                       |
| 102 | 5019 0265 | Kit Guarnizioni Acqua      | Water Seal Kit       | Ø30 | 3 | 153/200                       |
| 103 | 2409 0277 | Kit Pistone                | Piston Kits          | Ø36 | 3 | 220/140                       |
| 103 | 2409 0278 | Kit Pistone                | Piston Kits          | Ø33 | 3 | 185/160                       |
| 103 | 2409 0279 | Kit Pistone                | Piston Kits          | Ø28 | 3 | 133/210                       |
| 103 | 2409 0280 | Kit Pistone                | Piston Kits          | Ø25 | 3 | 106/250                       |
| 103 | 2409 0281 | Kit Pistone                | Piston Kits          | Ø30 | 3 | 153/200                       |
| 104 | 5019 0266 | Kit Guarnizioni Olio       | Oil Seal Kit         |     | 1 | Riduttore - Gear Box          |
| 104 | 5019 0292 | Kit Guarnizioni Olio       | Oil Seal Kit         |     | 1 | Senza Riduttore - No Gear Box |